

TIIG
INJURY SURVEILLANCE IN THE NORTH WEST OF ENGLAND

TAMESIDE GENERAL HOSPITAL EMERGENCY DEPARTMENT

MONTHLY BULLETIN: OCTOBER 2013 TO SEPTEMBER 2014

This bulletin provides a breakdown of all injury attendances to Tameside General Hospital Emergency Department (ED) between October 2013 and September 2014.

During this twelve month period there were 79,118 injury attendances to the ED. The month with the highest number of attendances, calculated as a daily average, was July 2014 (240 per day) with August 2014 having the lowest attendances (195 per day; **Figure 1**).

Females accounted for over half (51%) of all injury attendances (**Figure 1**) and the highest proportions of attendances were for those aged between 20 and 34 years and aged 65 years or older (22% each; **Figure 2**).

The highest proportion of attendances (87%) were categorised as other injuries. Falls accounted for 6% of injury attendances while sports injuries and road traffic collisions (RTCs) each accounted for 2% (**Table 1**).

Over four in ten (45%) fall attendees were aged 65 years or over, almost six in ten (59%) sports injury attendees were aged between five and 19 years and over four in ten (42%) RTC attendees were aged between 20 and 34 years (**Figure 3**).

Table 2 shows the ethnicity of injury attendees to Tameside General Hospital ED. The majority (54%) were White but almost four in ten (39%) did not have a recorded ethnicity.

Table 3 shows the incident location of injury attendances. Close to seven in ten (68%) occurred in the home while 10% occurred in a public place.

The disposal of a patient can give an indication of the severity of the injuries sustained. Close to six in ten (57%) attendees were referred for further treatment, 26% were admitted to hospital and 13% were discharged (**Table 4**). Close to three in ten (29%) RTC attendees were discharged, almost three-quarters (73%) of sports injury attendees were referred for follow-up treatment and over four in ten (46%) deliberate self-harm (DSH) attendees were admitted to hospital (**Table 5**).

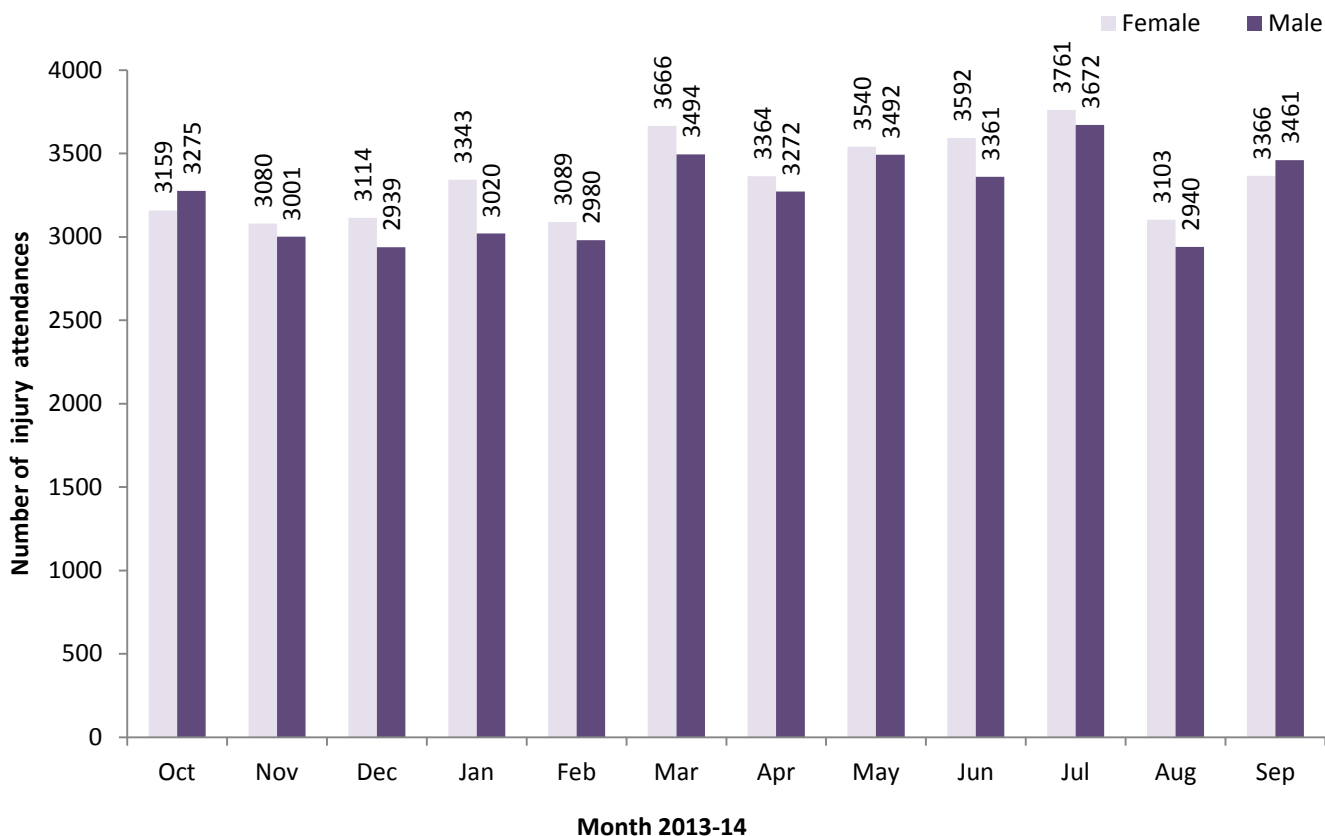
Table 6 shows the arrival method of attendances to Tameside General Hospital ED. Over three in ten (31%) arrived by ambulance.

Assault attendances

Between October 2013 and September 2014 there were 907 assault-related injury attendances to Tameside General Hospital ED.

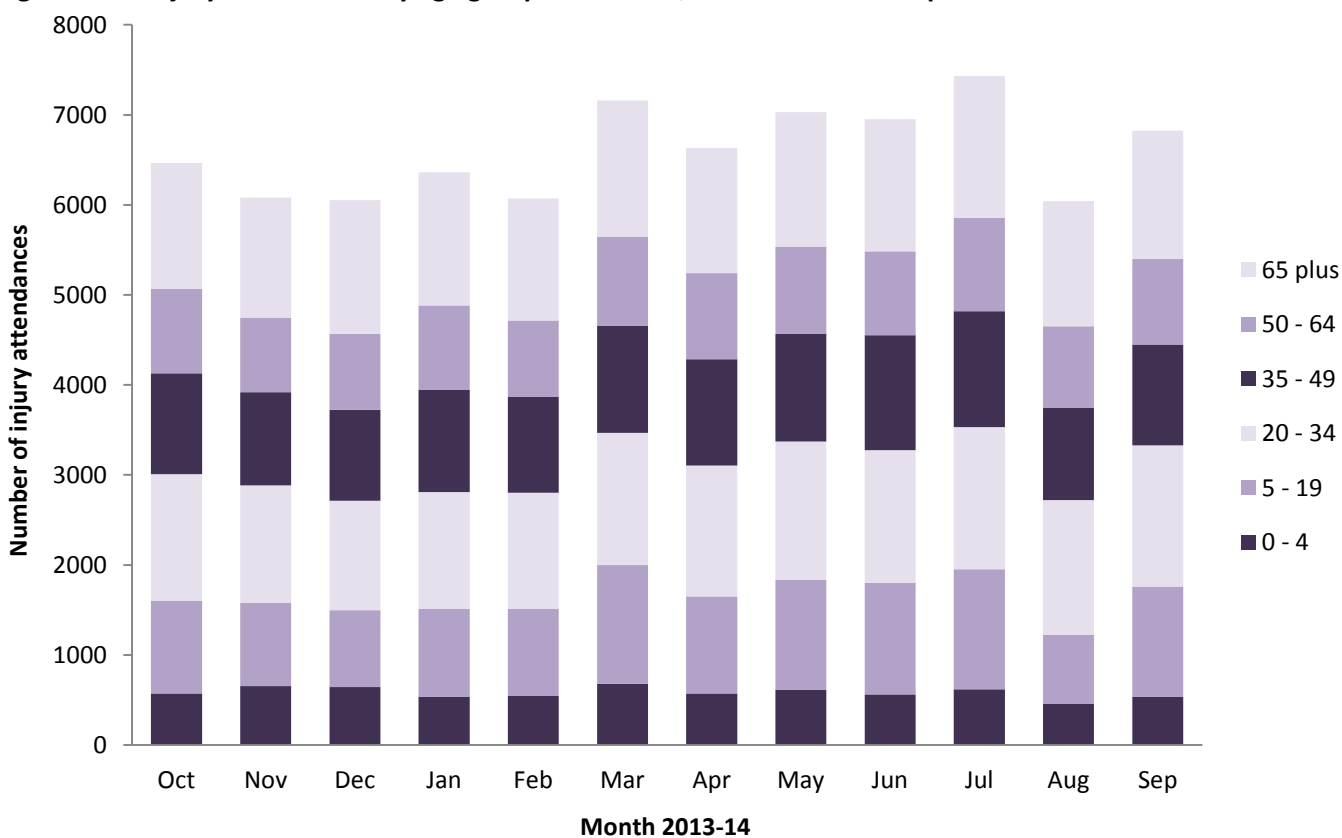
Over six in ten (64%) were male and 42% were aged between 20 and 34 years. Over four in ten (43%) arrived at the ED by ambulance (**Table 7**).

Figure 1: ED injury attendances by gender and month, October 2013 to September 2014[^]



[^] There were 34 records where the gender was unknown; these have been omitted from the chart.

Figure 2: ED injury attendances by age group and month, October 2013 to September 2014[§]

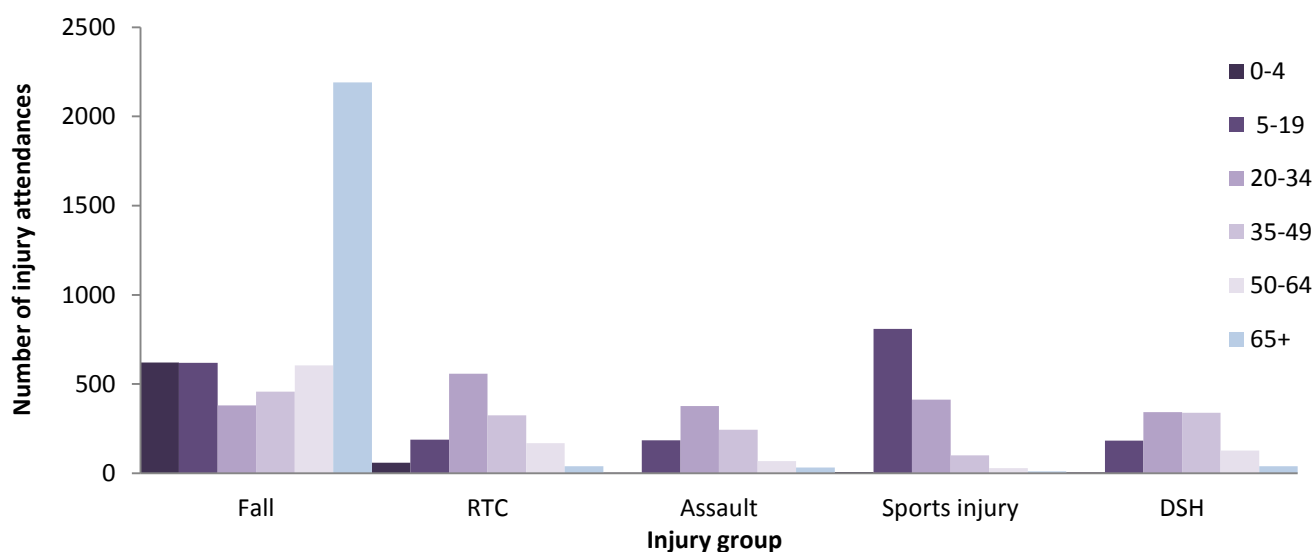


[§] There were 5 records where the age was unknown; these have been omitted from the chart.

Table 1: ED injury attendances by injury group and month, October 2013 to September 2014

Injury group	Oct	Nov	Dec	Jan	Feb	Mar	Apr	May	Jun	Jul	Aug	Sep	Total	%
Other injury	5637	5290	5304	5583	5292	6277	5818	6182	6128	6602	5261	5849	69223	87
Fall	361	344	388	414	374	397	383	397	395	428	459	529	4869	6
Sports injury	123	108	50	65	69	147	134	141	149	132	76	171	1365	2
RTC	113	132	83	70	130	145	109	137	100	102	97	117	1335	2
DSH	104	82	66	82	70	82	96	101	104	90	83	74	1034	1
Assault	75	60	75	80	67	80	86	74	77	79	67	87	907	1
Alcohol related	51	40	45	32	35	0	0	0	0	0	0	0	203	0
Not recorded	0	27	43	38	32	32	10	0	0	0	0	0	182	0
Total	6464	6083	6054	6364	6069	7160	6636	7032	6953	7433	6043	6827	79118	100

Figure 3: ED injury attendances by age group and injury group (excluding other injury), October 2013 to September 2014[§]



[§] There were 5 records where the age was unknown; these have been omitted from the chart.

Table 2: ED injury attendances by ethnicity and month, October 2013 to September 2014^{1,2,3}

Ethnicity	Oct	Nov	Dec	Jan	Feb	Mar	Apr	May	Jun	Jul	Aug	Sep	Total	%
White	2015	4568	4559	4715	2657	0	0	5038	4918	5123	4411	4622	42626	54
Not collected	4269	991	893	1078	3095	7160	6636	1199	1231	1471	994	1656	30673	39
Pakistani	13	103	108	111	55	0	0	112	16	74	88	0	680	1
Bangladesh	50	65	77	58	49	0	0	67	7	48	68	0	489	1
Indian	10	57	52	40	<25	0	0	64	***	33	30	0	311	0
Mixed	8	47	47	45	36	0	0	44	52	44	28	43	394	0
Not stated	68	147	216	240	108	0	0	407	394	452	330	209	2571	3
Any other group	21	70	54	42	29	0	0	64	54	59	60	56	509	1
Black	6	23	28	22	10	0	0	20	41	43	22	18	233	0
Chinese	***	5	9	6	6	0	0	***	<10	9	***	7	54	0
Asian other	***	7	11	7	***	0	0	<20	231	77	<15	216	578	1
Total	6464	6083	6054	6364	6069	7160	6636	7032	6953	7433	6043	6827	79118	100

¹ Please note that for all tables, all numbers less than five have been suppressed (with ***) in line with patient confidentiality. If there is only one number less than five in a category then two numbers will be suppressed to prevent back calculation from totals.

² White = Irish, British, other White background; Mixed = White and Black, White and Asian, Mixed - any other; Black = African, Caribbean, other Black.

³ Ethnicity was not recorded for any attendees during March and April 2014 which substantially affected the yearly totals.

Table 3: ED injury attendances by incident location and month, October 2013 to September 2014*

Incident location	Oct	Nov	Dec	Jan	Feb	Mar	Apr	May	Jun	Jul	Aug	Sep	Total	%
Home	4064	4150	4223	4271	4089	5000	4543	4839	4573	5179	4136	4521	53588	68
Other	1242	885	996	1328	1097	893	978	1135	1309	1197	1143	1209	13412	17
Public place	703	624	527	441	580	814	724	633	690	660	550	637	7583	10
Work	251	237	178	170	150	239	255	249	195	225	202	261	2612	3
Educational establishment	166	187	130	154	153	214	136	176	186	172	12	199	1885	2
Total	6426	6083	6054	6364	6069	7160	6636	7032	6953	7433	6043	6827	79080	100

* There were 38 records in October where the incident location was not known; these have been omitted from the table.

Table 4: ED injury attendances by disposal method and month, October 2013 to September 2014⁴

Disposal method	Oct	Nov	Dec	Jan	Feb	Mar	Apr	May	Jun	Jul	Aug	Sep	Total	%
Referral/follow-up	3487	3291	3342	3700	3365	4151	3890	4155	4128	4353	3454	4049	45365	57
Admitted	1762	1671	1794	1749	1640	1823	1659	1703	1660	1767	1544	1580	20352	26
Discharged	829	857	685	709	816	843	817	928	859	907	764	898	9912	13
Other	386	264	233	206	248	343	270	246	306	406	281	300	3489	4
Total	6464	6083	6054	6364	6069	7160	6636	7032	6953	7433	6043	6827	79118	100

Table 5: ED injury attendances by disposal method and injury group (excluding other injury), October 2013 to September 2014⁴

Disposal method	Assault		Fall		RTC		DSH		Sports injury		Total	
	n	%	n	%	n	%	n	%	n	%	n	%
Referral/follow-up	560	62	2721	56	846	63	376	36	995	73	5498	58
Discharged	182	20	904	19	388	29	27	3	329	24	1830	19
Admitted	52	6	1108	23	40	3	480	46	20	1	1700	18
Other	113	12	135	3	61	5	151	15	21	2	481	5
Total	907	100	4868	100	1335	100	1034	100	1365	100	9509	100

Table 6: ED injury attendances by mode of arrival and month, October 2013 to September 2014

Arrival mode	Oct	Nov	Dec	Jan	Feb	Mar	Apr	May	Jun	Jul	Aug	Sep	Total	%
Other	4388	4040	3892	4281	4079	4920	4617	4893	4843	5290	4170	4840	54253	69
Ambulance	2076	2043	2162	2083	1990	2240	2019	2139	2110	2143	1873	1987	24865	31
Total	6464	6083	6054	6364	6069	7160	6636	7032	6953	7433	6043	6827	79118	100

⁴ Admitted = admitted to ED bed/became a lodged patient of the same health care provider; Discharged = discharged - did not require any follow-up treatment; Referral/follow-up = discharged - follow-up treatment to be provided by GP, referred to ED clinic, referred to fracture clinic, referred to other out-patient clinic, transferred to other health care provider, referred to other health care professional; Other = died in department, left department before being treated, left department having refused treatment, other.

ASSAULTS

Table 7: ED assault attendances by gender, arrival mode and age group, October 2013 to September 2014^{^1}

	Assault attendances (n=907)		All injury attendances (n=79,118)
	n	%	%
Gender			
Female	<330	36	51
Male	581	64	49
Arrival mode			
Other	518	57	69
Ambulance	389	43	31
Age group			
0 - 4	***	0	9
5 - 19	184	20	16
20 - 34	377	42	22
35 - 49	244	27	17
50 - 64	68	7	14
65 plus	<35	3	22

[^] There were <5 assault records where the gender was unknown; these have been omitted from the table.